

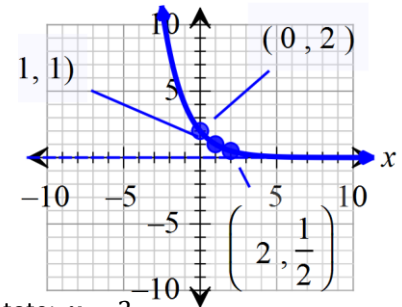
**SM3 Test review on unit 11**

1. -2
2. 5
3. 3
4.  $\frac{1}{2}$
5.  $-\frac{1}{2}$
6. 3
7. 2
8. 20
9. -2
10. 1
11. 0
12.  $\approx 1.5051$
13.  $\approx -0.0202$
14. no solution
15.  $\approx 172.4662$
16.  $10^4 = x$
17.  $e^x = 5$
18.  $3^5 = 243$
19.  $\log_5 625 = 4$
20.  $\log 100 = x$
21.  $\ln x = 2$
22.  $x = 1$
23.  $x = 3$
24. reflect over  $y$  -axis, translate down 7
25. vertical stretch by factor of 3, translate left 3
26. D
27.  $(\log_2 5 + \log_2 x) - \log_2 y$
28.  $\log_8(2x - 3) - 4 \log_8 x$
29.  $\log_3 \left(\frac{6}{a}\right)$
30.  $\log(x^4 y^2)$
31.  $\log_4 \left(\frac{9x-45}{x^7}\right)$
32.  $\frac{\log 210}{\log 3.4} \approx 4.3694$
33.  $\frac{\log 3.8}{\log 4} \approx 0.9630$
34.  $x = 2$
35.  $x \approx 3.990$
36.  $x = 30$
37.  $x = 166670$
38.  $x \approx 3.447$
39.  $x = \frac{5}{2}$
40.  $x = 84$
41.  $x = \frac{41}{12}$  or  $x \approx 3.417$
42.  $x \approx 6.161$
43.  $x \approx 0.050$

44. Domain:  $(-\infty, \infty)$ , Asymptote:  $y = 0$

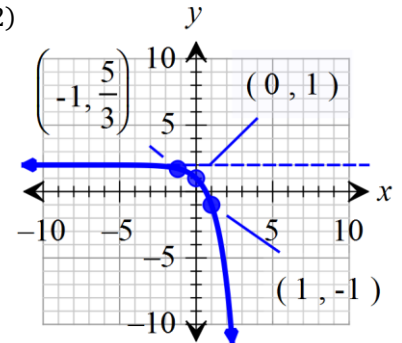
Key points and transformations: translate right 1y,

Range:  $(0, \infty)$



45. Domain:  $(-\infty, \infty)$ , Asymptote:  $y = 2$

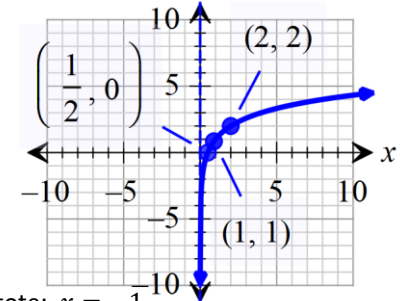
Key points and transformations: reflect over  $x$  -axis, translate up 2, Range:  $(-\infty, 2)$



46. Domain:  $(0, \infty)$ , Asymptote:  $x = 0$

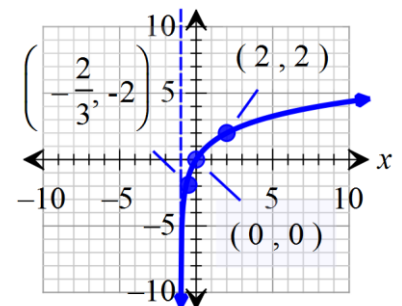
Key points and transformations: translate up 1,  $y$

Range:  $(-\infty, \infty)$



47. Domain:  $(-1, \infty)$ , Asymptote:  $x = -1$

Key points and transformations: vertical stretch by factor of 2, translate left 1, Range:  $(-\infty, \infty)$   $y$



48.  $f^{-1}(x) = \frac{x+3}{2}$

49.  $f^{-1}(x) = \sqrt[3]{4x+2}$

50.  $f^{-1}(x) = x^2 - 3$

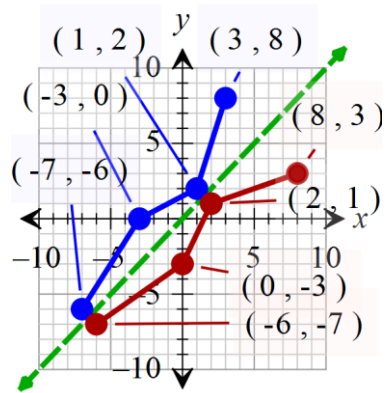
51.  $f^{-1}(x) = -2 \pm \sqrt{\frac{x+3}{2}}$

52.  $f^{-1}(x) = \frac{(-x+5)^3}{3}$

53.  $f^{-1}(x) = \frac{x+5}{2x-3}$  or  $f^{-1}(x) = \frac{-x-5}{-2x+3}$

54.  $(-\infty, 10)$

55.



56.  $A \approx \$14859.47$

57.  $t \approx 7$  years